



Highgrove



The Somerset House Collection

# The Somerset Corner

with Elevator

---

3 BEDROOMS / 4 BATHROOMS  
INTERIOR 2,135 SQ.FT.



Rendering is Artist concept

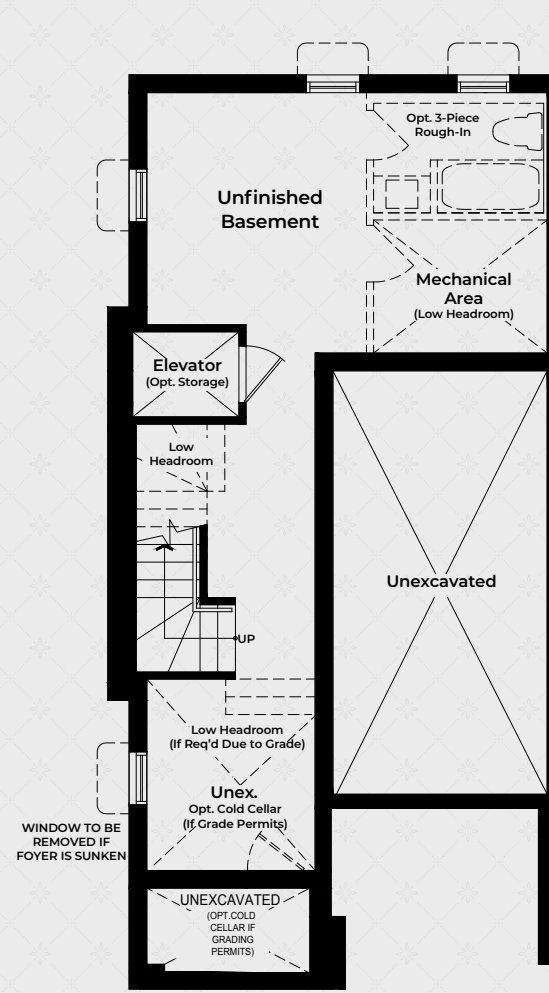


The Somerset House Collection

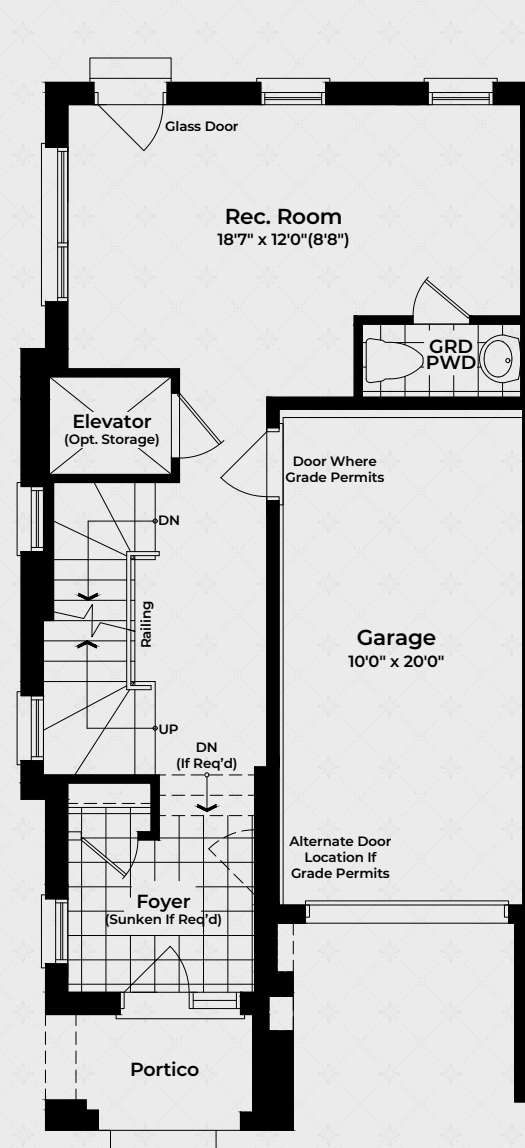
# The Somerset Corner

with Elevator

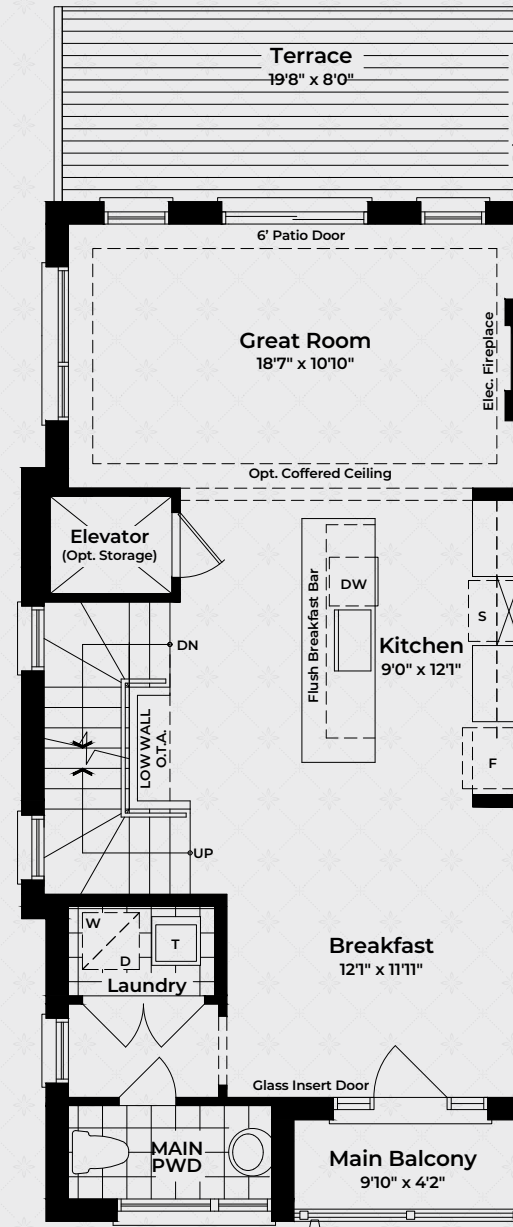
3 BEDROOMS / 4 BATHROOMS  
INTERIOR 2,135 SQ.FT.



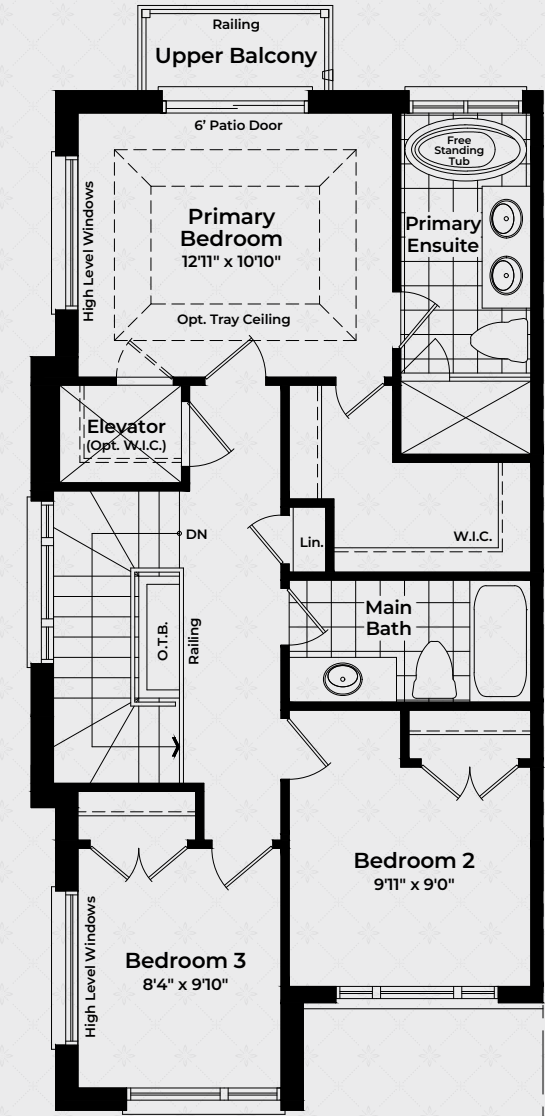
**BASEMENT**  
Elev. A  
W/ Opt. Elevator



**GROUND FLOOR**  
Elev. A  
W/ Opt. Elevator



**MAIN FLOOR**  
Elev. A  
W/ Opt. Elevator



**UPPER FLOOR**  
Elev. A  
W/ Opt. Elevator

Purchasers are advised that all prices, sizes, figures, materials, plans, specifications, floor plans and information, including without limitation the size, location, design and layout of windows, walls, doors, structures, appliances (if any), and the balcony and terrace are subject to change without notice to the purchaser for any reason whatsoever at the sole, unfettered and absolute discretion of the vendor. Actual usable floor space, living area and square footage may vary from stated floor area. All floor plans are approximate dimensions. Balconies, terraces and layouts are determined by the block your unit is in. All renderings and illustrations are artist's concept only. Furniture is depicted for illustration purposes only and is not included. The unit shown may be the reverse of the unit purchased. The location of the building and units shown are approximate only and are subject to change without notice to the purchaser. E. & O.E. May 2023.